



# SPACE MOONS

Here at spaceport we have put together our brand new exhibition! All about the moons of our solar system. Our goal with this exhibition is to draw the attention away from the planets of the solar system and explore the amazing hidden worlds orbiting around your favourite planets. This booklet is to show some of the more interesting moons in a bit less detail for the full experience go visit Spaceport in wallesey where you can find over 50 moons! It's an out of this world experience for everyone!



# Saturn And Jupiter

Saturn, Uranus and Jupiter do have more than just two or one moon these are just their most interesting ones.



## EUROPA

It's thought that below Europas ice sheet crust is a subsurface ocean which some scientists believe could hold life if possible hydrothermal vents (a vent that pushes out warm or hot water from it). But another possible situation underneath Europas surface that it is just thick warm ice with no life whatsoever. Europa does have an atmosphere but it is incredibly thin and is only made out of oxygen it's not produced through wildlife like our oxygen and is maintained by particles hitting the surface producing water vapour from its icy surface.

Europa's Home Planet



JUPITER

Europa And Our Moon Comparison



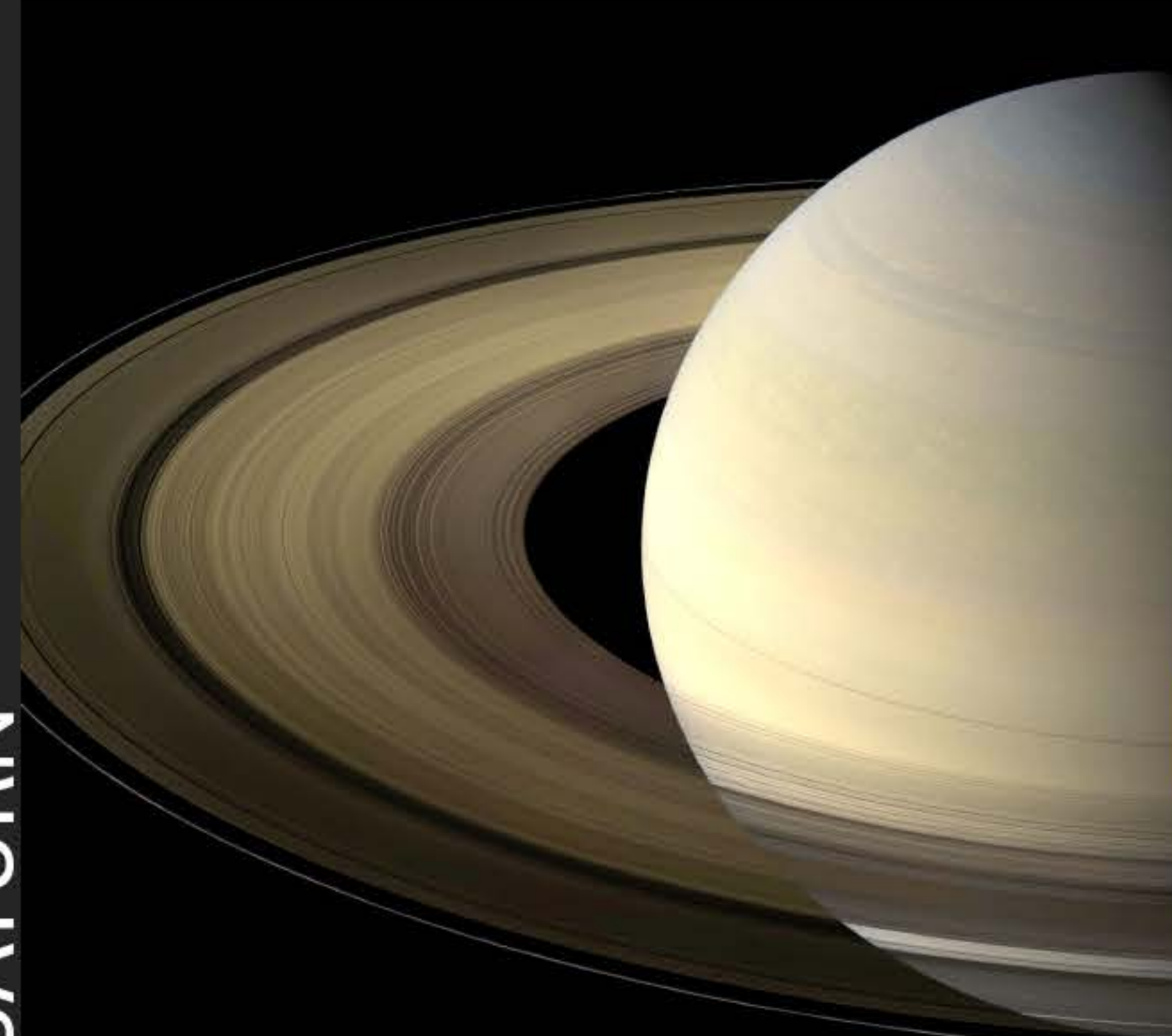
Close Up Surface Image Of Europa



Titan And Our Moon Comparison



Titan's Home Planet



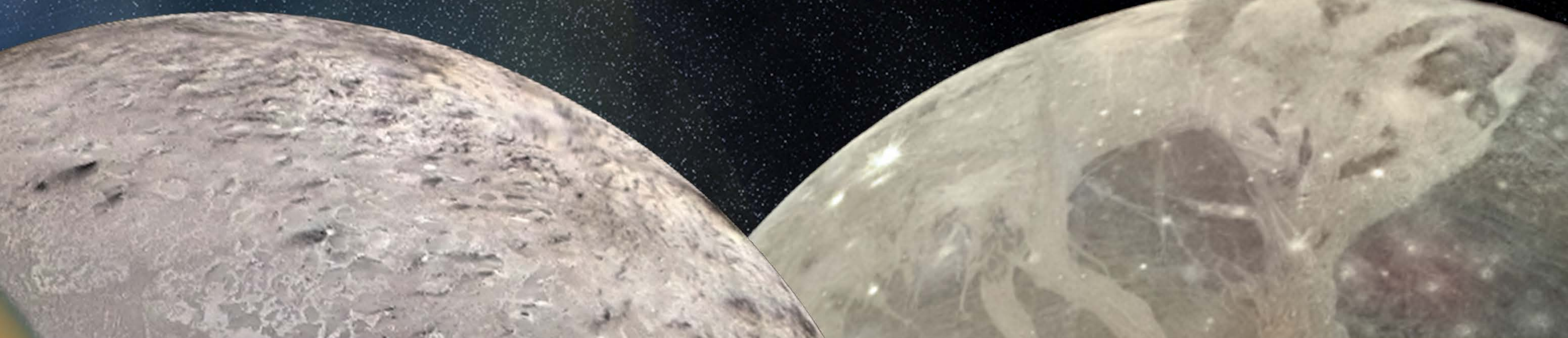
SATURN

## TITAN

Titan has a thick atmosphere (thicker than Earth's) on its surface are multiple lakes made up of liquid ethane and methane (two gasses). Its surface is very cold which is why the gasses are in a liquid state -179 °C. Its atmosphere is made up of mostly nitrogen like Earth but the rest is made up of methane and hydrogen it is considered the least hostile place in the outer solar system for humans to survive in. Due to the methane lakes scientists think that possible methane based life could survive on the moon.

These moons are hidden away from us by our limitations as humans we can't fly there and walk around on them due to them being millions of miles away and the chances of ever visting them is very low . So the best we can do is look through a massive teliscope or send satalites to them with cameras on them but to normal humans with normal eyes we can't see them we can hardly even see the other planets with the naked eye. This is why we created the new moons exhabition here at spaceport so you can see these fantastic hidden worlds

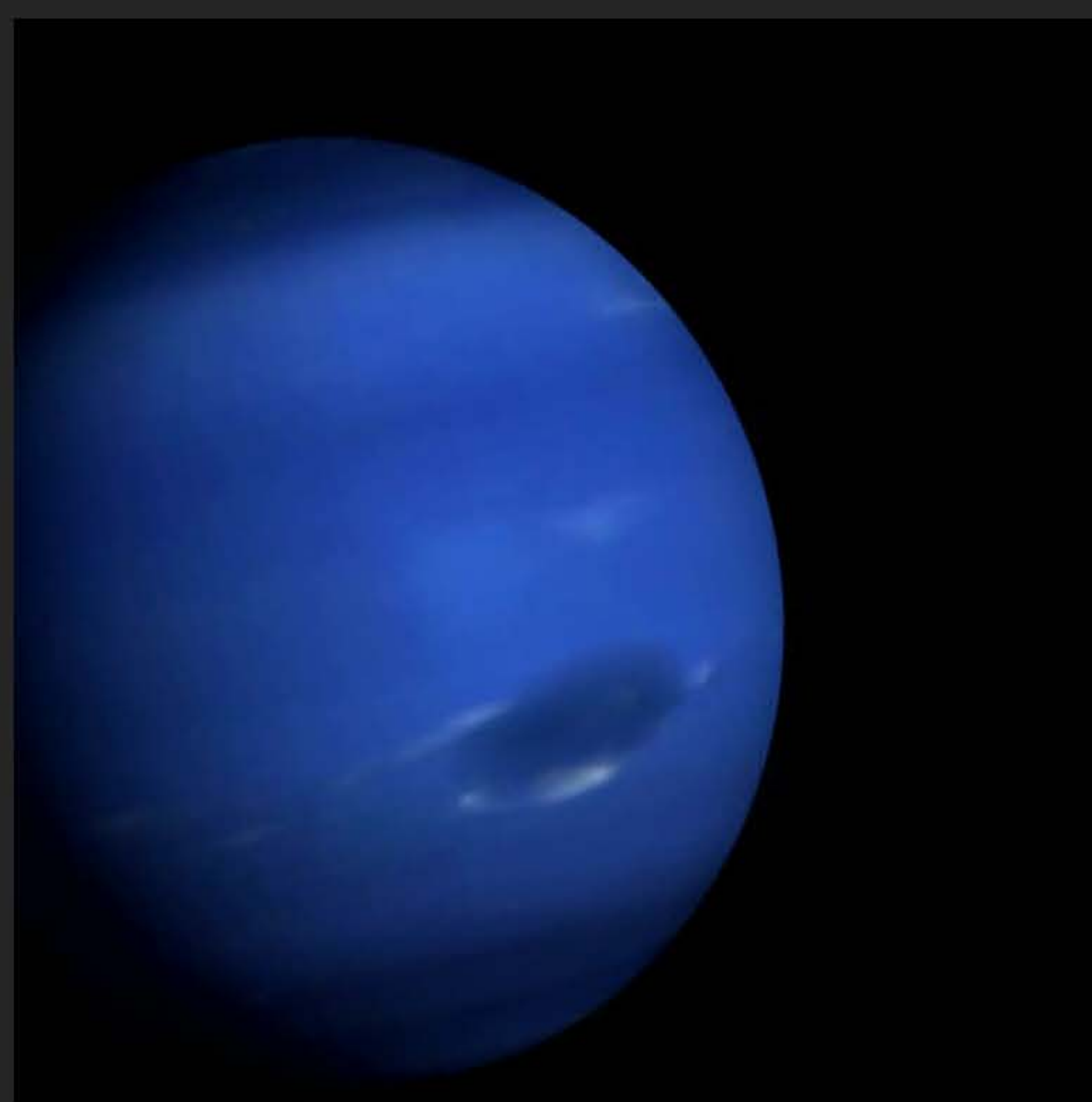
# Uranus And Jupiter



## TRITON

Triton is Uranus's biggest moon and it's most interesting. Triton is the only moon in the outer solar system that orbits in the opposite direction of it's planets spin. Triton is completley frozen with some interesting landscapes full of craters adn geysers and a rugged landscape called "canelope terrain" this all indicates some sort of activity happening underneath the surface. Those geysers are spouting nitrogen gas which shoot up as high as 8km.

Triton's Home Planet



Close Up Of Triton's Surface



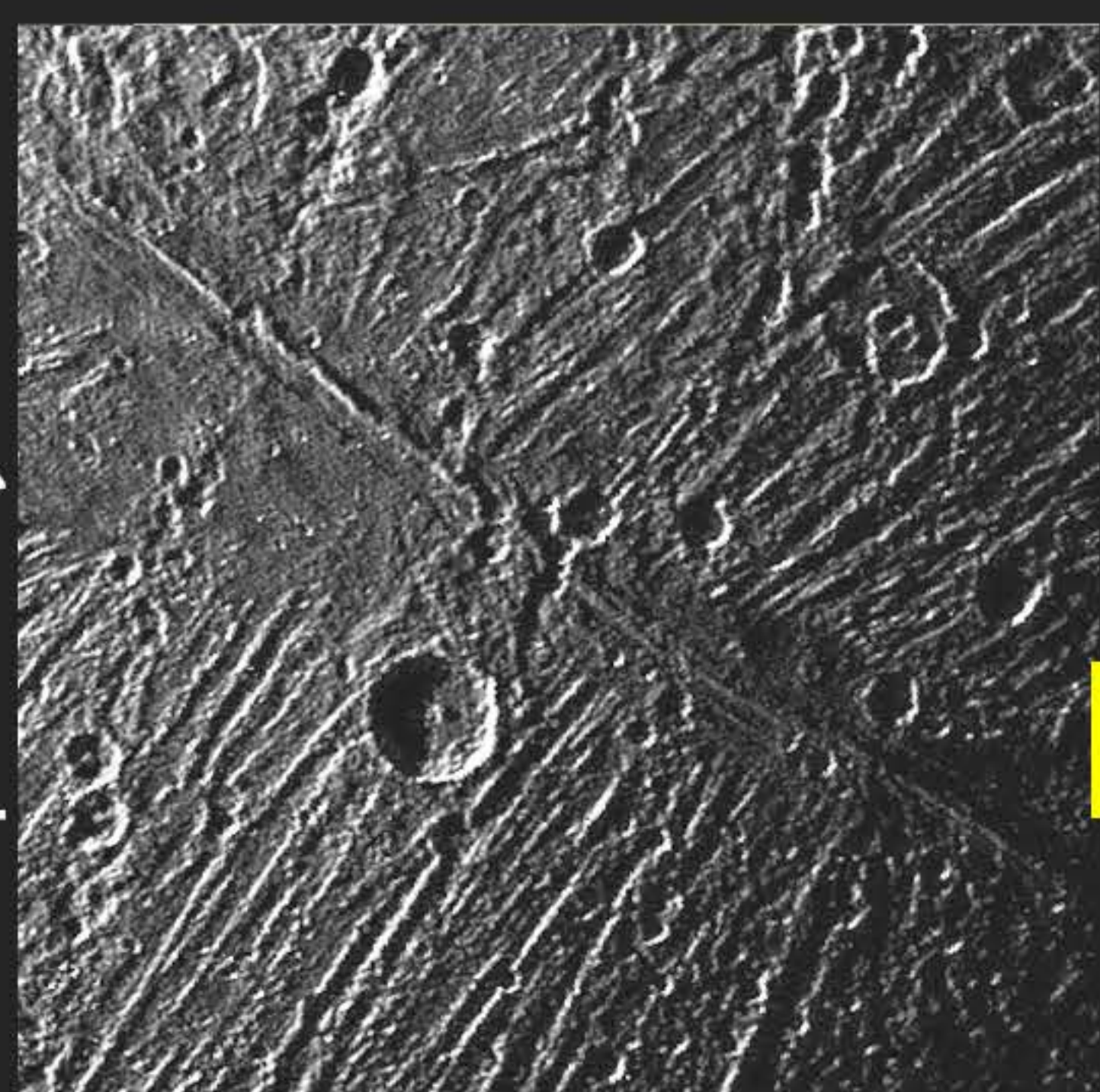
Triton And Our Moon Comparison



Ganymede And Our Moon Comparison



Close Up Of Ganymede's surface



## GANYMEDE

Ganymede is Jupiters largest moon and was discovered in 1601 Galileo. The moon is so big that it's actaully larger than the planet Mercury! It could be considered a dwarf planet like Europa it's thought that it has a subsurface ocean. It's core is made up of liquid nickel and iron which is thought to give Ganymede a strong magnetic field. Ganymede also has a thin atmosphere of oxygen which is thought to be made by solar radition hitting the surface melting the water ice on the surface.

# CONTACT DETAILS

PHONE - 0151 330 1003

EMAIL - [spaceport.schools@merseytravel.gov.uk](mailto:spaceport.schools@merseytravel.gov.uk)  
(school bookings)

[comments@merseytravel.gov.uk](mailto:comments@merseytravel.gov.uk) (feedback)

# WEBSITE

[www.spaceport.org.uk](http://www.spaceport.org.uk)

# PRICES

Adult £9.50

Child £6.00

5-15 yrs

Family £26.00

2 adults & up to 3  
children

Concession £8.00

ADULTS £15.00

CHILD £9.00

FAMILY £41.00

**MERSEY  
FERRIES**

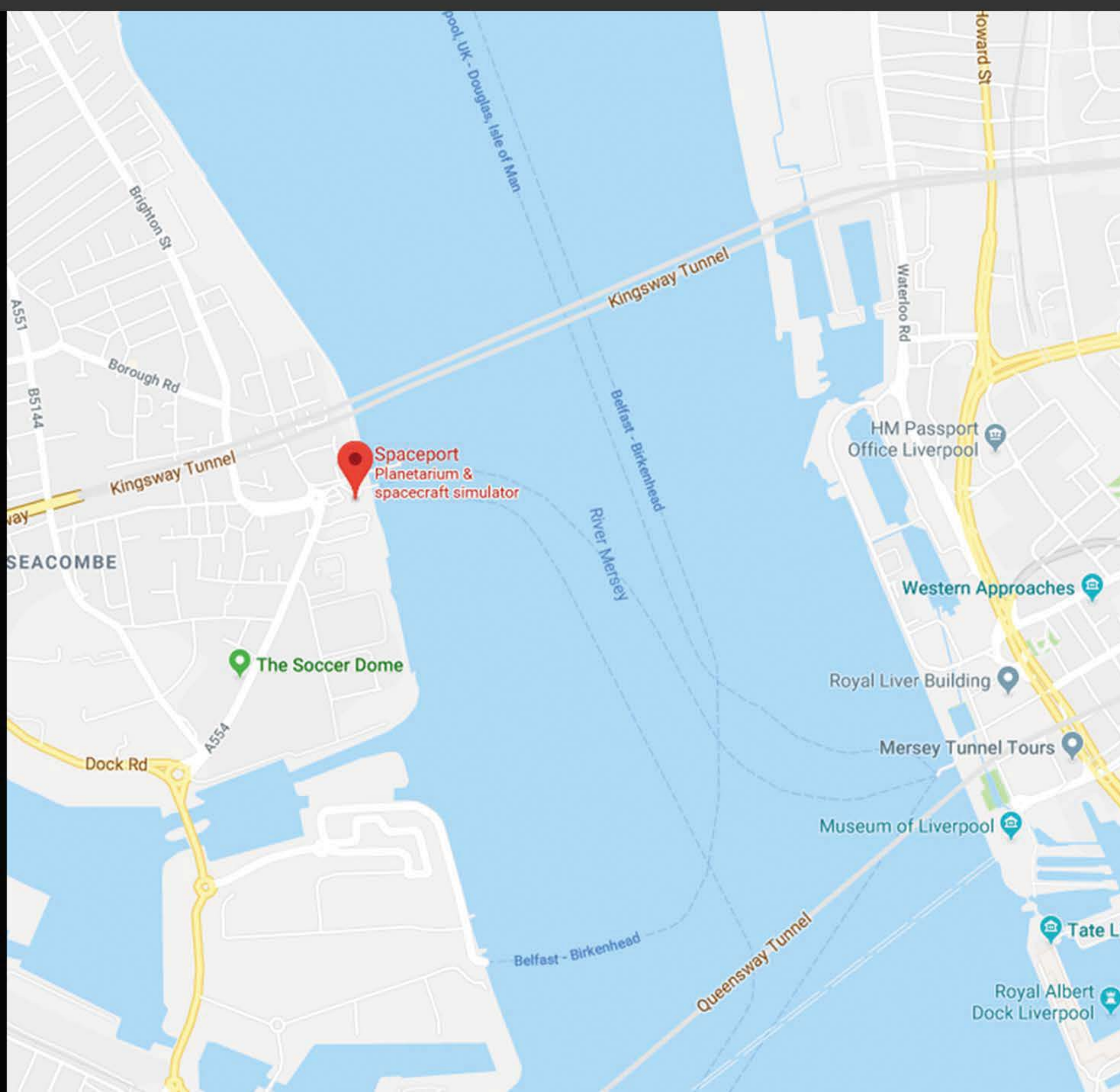
Take a Mersey Ferry to

Spaceport... why not

travel back in time too?



spaceport



# OPEN/CLOSING TIMES

(Mon – Sun, 8am - 8pm)

# LOCATION

Spaceport

Victoria Place

Seacombe

Wallasey

Wirral

CH44 6QY